

CROWN METROPOL

MEDIA RELEASE

Crown Metropol - Crown's Newest Hotel - Offers Guests Six Different Accommodation Options

Melbourne, Australia, June 2010. Crown's newest hotel, Crown Metropol, has 658 rooms including six, design-focused room types from which to choose.

Crown Metropol represents the evolution of luxury in a modern and refreshing context.

Traditional luxury finishes such as marble are abandoned and replaced with contemporary finishes including expansive panes of glass and an abundance of original artwork by both emerging and established artists and artisans.

The distinctive s-shaped hotel is 100 metres in length as well as height and features a range of accommodation unsurpassed anywhere in Australia.

Both sculpture and liquid mercury provided design inspiration for the hotel's architects and interior designers, Bates Smart.

Should guests comment that they feel like they are in a boutique hotel in New York or a large-scale hotel in a city such as Shanghai, the hotel's design vision will have been realised.

While there may be six different room variations, some features remain constant. All rooms showcase floor to ceiling windows, clever use of space, Soji-inspired privacy screens that divide the bathroom and bedroom, the latest in-room integrated technology (i-pod docking stations, high-definition LCD televisions and wireless Internet) original hand-painted artwork and access to the hotel's breath-taking gymnasium, indoor sundeck and swimming pool.

CROWN METROPOL

MEDIA RELEASE

Page 2 of 5

All of the hotel's accommodation boasts generous bathrooms that allow guests to view the city or Port Phillip Bay. Gordon Ramsay and his team, led by Chef de Cuisine, Josh Emett, have created Crown Metropol's in-room dining menu. The maze and maze Grill items on the hotel's room service menu allows guests to enjoy Gordon Ramsay's celebrated cuisine in the comfort of their own room.

The in-room dining menu is available 24 hours a day and features an extensive range of dishes, including arguably, Australia's best hotel breakfast menu. The breakfast menu lists different dishes such as farmer's market frittata with organic eggs with seasonal roasted vegetables, basil and goat's cheese and milk pancakes served with glazed blueberries, sweet confit of lemon and fresh ricotta.

Luxe Rooms

Located on levels 8 to 26, all rooms offer sweeping views across Melbourne and Port Phillip Bay.

King rooms feature a chaise lounge that converts into a comfortable sleeping alternative for an additional guest.

There are 579 Luxe rooms in total, inclusive of 405 king rooms and 174 twin rooms with a configuration of two queen-sized beds.

Luxe rooms are available from \$249.00 AUD per night.

Studios - R58 and R60

Spacious studios are located on the corners of the wave-shaped hotel on levels 8 to 26 and have additional living areas as well as a chaise lounge that converts into a bed to accommodate a third guest.

Studios are available from \$289.00 AUD per night.

CROWN METROPOL

MEDIA RELEASE

Page 3 of 5

Lofts

Showcasing earthy tones and an abundance of natural light and space, the hotel's lofts are as their name suggest, inspired by warehouse living. Lofts feature a separate living and dining area, an over-sized bathroom with deep soaking bath, double vanity and bedroom and no less than three LCD televisions.

Lofts are available from \$463.00 AUD per night.

Isika – Spa Residential Accommodation

Isika Luxe Room

Guests may choose to reside in one of 12 residential spa accommodation rooms located on level 26, giving them the utmost in privacy and relaxation with direct access via a private staircase to Isika.

A range of massage, reflexology and hand and feet treatments as well as Yoga and wellness consultations are able to be administered in residence.

The spa residential rooms feature a colour palette that triggers instant relaxation and sense of calm. Botanical prints and tactile textures in tones of mauve and the palest green add to the sense of tranquility. All spa accommodation also features a selection of wellness magazines, unlimited filtered water and herbal teas and a mini bar stocked with organic beverages, Balance water with flower essences, organic popcorn, fruit and aloe juices and a selection of fruit and nuts.

Guests may choose to select to stay for a single night or as many nights, weeks or indeed months as they wish. Specially designed retreats have been created to help guests reach their individual health and wellness goals. Retreats include

CROWN METROPOL

MEDIA RELEASE

Page 4 of 5

“De-Stress Me,” “Pure Detox,” “Bespoke Wellbeing,” “Kickstart Fitness” and “Vital Youth.”

Spa accommodation rates begin from \$449.00 AUD per room, per night.

The Apartment

The ultimate accommodation offering at Crown Metropol is “The Apartment”, which had been designed with visiting high-calibre entertainers and leading business identities in mind. It is unapologetically original and entirely one of a kind. The Apartment looks and feels like a private residence. The attention to detail features inclusions such as a collection of hand-picked, second-hand books purchased at auction, an eclectic display of artwork and an oversized ottoman made by local saddle-makers to name a few.

The Apartment is both an ideal retreat as well as a space for intimate gatherings. Unexpected touches include trompe d’oeuil pieces of art and custom-made furniture that looks like anything but what you’d expect to see in a hotel.

The Apartment accommodates two guests and connects with a twin room that can accommodate up to four guests. This signature residence includes an entrance area, lounge and dining area that seats up to 6 guests.

The Apartment is available for \$5000.00 AUD per night.

Check-in for The Apartment and Isika accommodation is on level 28.

Guests of the Apartment and Isika accommodation are entitled to enjoy breakfast and pre-dinner drinks daily from 5.30pm- 7pm as well as complimentary tea, coffee and soft drinks in “28”, overlooking the Melbourne skyline.

CROWN METROPOL

MEDIA RELEASE

Page 5 of 5

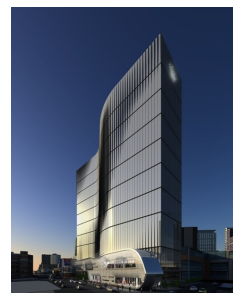
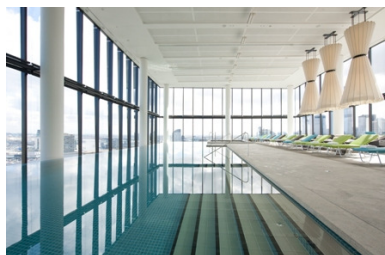
For \$110.00 AUD per room, per night (plus g.s.t.), guests may enhance their experience and gain guest privileges to "28," Crown Metropol's sky-high guest lounge, bar and outdoor terrace where they will enjoy buffet or a la carte breakfast and complimentary evening drinks including Chandon sparkling wine, a range of white and red wines, Australian beers and house spirits accompanied by "28"'s signature nut selection, mixed marinated olives and house-made dips and freshly-baked Turkish bread.

Additional extras include valet parking (\$27.00 AUD), wireless Internet access (\$25.00 AUD), breakfast at maze (\$35.00 AUD), limousine airport transfer (\$110.00 AUD), French Champagne (\$88.00 AUD) and premium sparkling wine (\$44.00 AUD).

The cutting-edge, unmistakably modern hotel is paired with high-calibre personalised service for which Crown is renowned.

Bookings may be made at Crown Metropol by visiting crownmetropol.com.au or by contacting +61 3 9292 8321.

-END-



For further media information or to obtain high resolution images please contact:

TARA BISHOP

Media Relations Manager
Crown Entertainment Complex
T. +61 3 9292 8673
M. +61 422 003 549
E. tarab@crownmelbourne.com.au

ANN PEACOCK

General Manager - Public Relations
Crown Entertainment Complex
T. +61 3 9292 8607
M. +61 412 334 614
E. annp@crownmelbourne.com.au